

Kiddie Land

Montessori Kindergarten



Jl. Siliwangi no.60 Bogor 16131
☎0877 1938 0999

Kiddie Land History

Kiddie Land was established with a fierce determination to make Kiddie Land a school where "children could develop academic skills and build essential skills for life, they pushed through."

Our commitment to academic excellence and dedication to the child as a whole remains unwavered.



Kiddie Land
Montessori Kindergarten



“teach your child to love to learn”



Kiddie Land PHILOSOPHY



Individual Approach

We believe a teacher can better provide for the child if he or she is familiar with the child. That's why the child is often taught on one to one basis. This way, the teacher is able to address the specific needs of the child and can respond to that individual child's interest and understanding level.



Hands-on Learning

Instead of listening to the teacher and working with pencil and paper, children in our classrooms learn by practicing with apparatus that embodies the concept to be mastered.





The Learner

Children in Montessori schools are often several years above grade level in their basic skills. Also, since the Montessori Education is comprehensive, children are often exceptionally knowledgeable in many other areas. Our learner is happy and well adjusted to the social community. The student is willing to help another child.

Absorbent Mind

The child absorbs information much like a sponge from the environment in his first years of life. Also, the child is capable of attending to tasks which interest them for a long period of time.



Discipline

Children in Montessori Environment are pleasant, peaceful, generous, friendly, cooperative and well-behaved. Our discipline method does not involve coercion or manipulation. Because all the needs of the children are met and the children sense the teacher as a source of help the children want to be accepted as members of the group. Through this process, non-acceptable behavior lessens and finally disappears. In practice, the method of discipline may vary slightly from class occasionally time outs and counseling has proven to be necessary to discipline.



Teachers

Montessori teachers are specifically shown how to teach children to read, write and do Maths. In addition, the teachers are trained in positive, constructive Montessori methods. Teachers are taught how to help children the various subject areas; botany, zoology, social sciences of history and geography; art & music, dance and different forms of handwork such as sewing. Teachers are also taught techniques and materials for developing basic capacities such as control over movement and development of the senses.



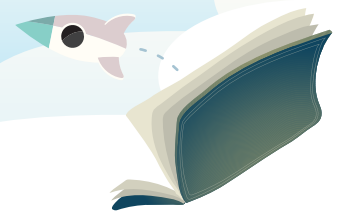


The Program

Kiddie Land offers Montessori exercises to develop the child's basic capabilities - his ability to control movement (motoric skills) to use senses (perceptual development), to think (cognitive development), to decide (volitional development) and to feel emotions (emotional development).

In this way, the program helps the child become a competent learner. This develops independence and responsibility.

In addition, Kiddie Land offers activities and exercises to help the child develop a strong foundation in Language, Mathematics, Geography, Zoology, Botany History and Art. Children can further learn to be contributing member of the community through the exercise of Practical Life.



Kiddie Land

Montessori Kindergarten

Legacy

Montessori Curriculum

Child
centered
education

Building
strong
character

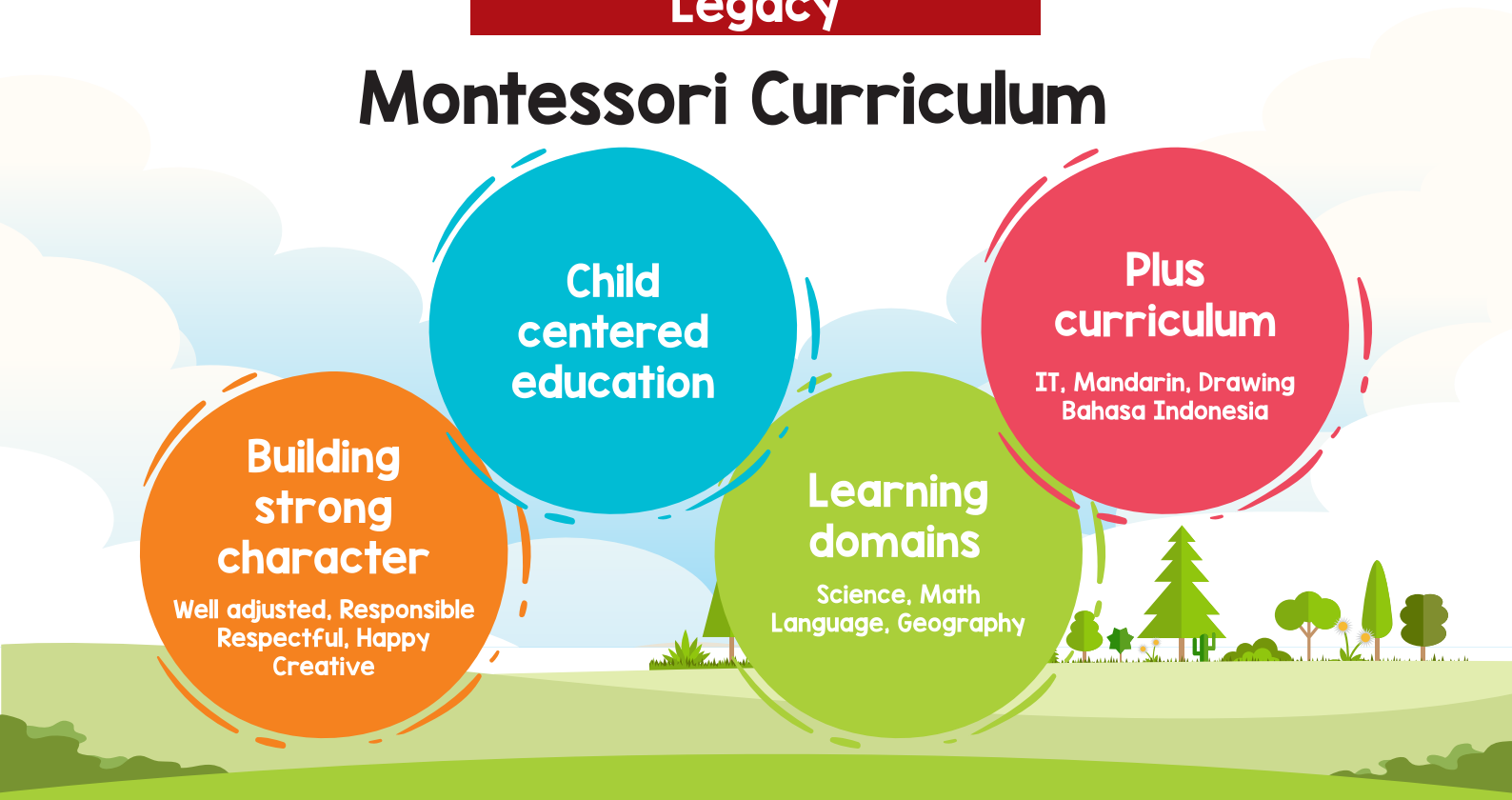
Well adjusted, Responsible
Respectful, Happy
Creative

Learning
domains

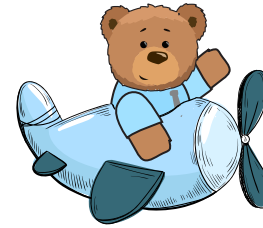
Science, Math
Language, Geography

Plus
curriculum

IT, Mandarin, Drawing
Bahasa Indonesia



Why learn in “International” setting



- sensitive period for language.
- more 80% of all we learn is done during these years.
- even if they move to a National schools, their English remains fluent, putting them at an advantage.

Which primary school can Kiddie Graduates go to



Kiddie Land Graduates
are free to go to local,
national plus or
international primary school.





Kiddie Land

Montessori Kindergarten

For further information please check out our social media channels:

 <https://www.facebook.com/kiddieland.montessori/>

 semarang: kiddielandmontessori

 bogor: kiddieland_bogor